



SIGNET RANGER

OWNER	Signet Maritime Corporation Houston, Texas	BERTHING	4
DESIGNER	A&B Industries, Amelia, LA	PROPULSION	Two (2) CAT Model 3512B
BUILT	A&B Industries, Amelia, LA	Brake HP/Engine	1,500
YEAR BUILT	2004	Total Horsepower	3,000
SERVICE	Harbor Tug	Reduction Gears	Two (2) Twin Disc Model MG5600
OFFICIAL NUMBER	1152107	Propellers	Two (2) 86" x 55" 2-5 Blade Aqualloy
DIMENSIONS		GENERATORS	Two (2) CAT Model 3054T
LOA	82'	Power	72 kW, 208V, 60Hz
Breadth	26'	BOLLARD PULL	36 Metric Tonnes
Depth	11'	DECK EQUIPMENT	Capstan McElroy/Catchot 21" Hydraulic, 30 HP
Deep Draft	9'	BOW HAWSER	2-1/4" x 200' Neutron 12 HMPE
Height of Eye	16'5"		
Gross Registered Tonnage	98		
CAPACITIES			
Fuel Oil	37,000 Gallons		
Potable Water	5,000 Gallons		
Lube Oil Storage	150 Gallons		
Dirty Oil Storage	150 Gallons		

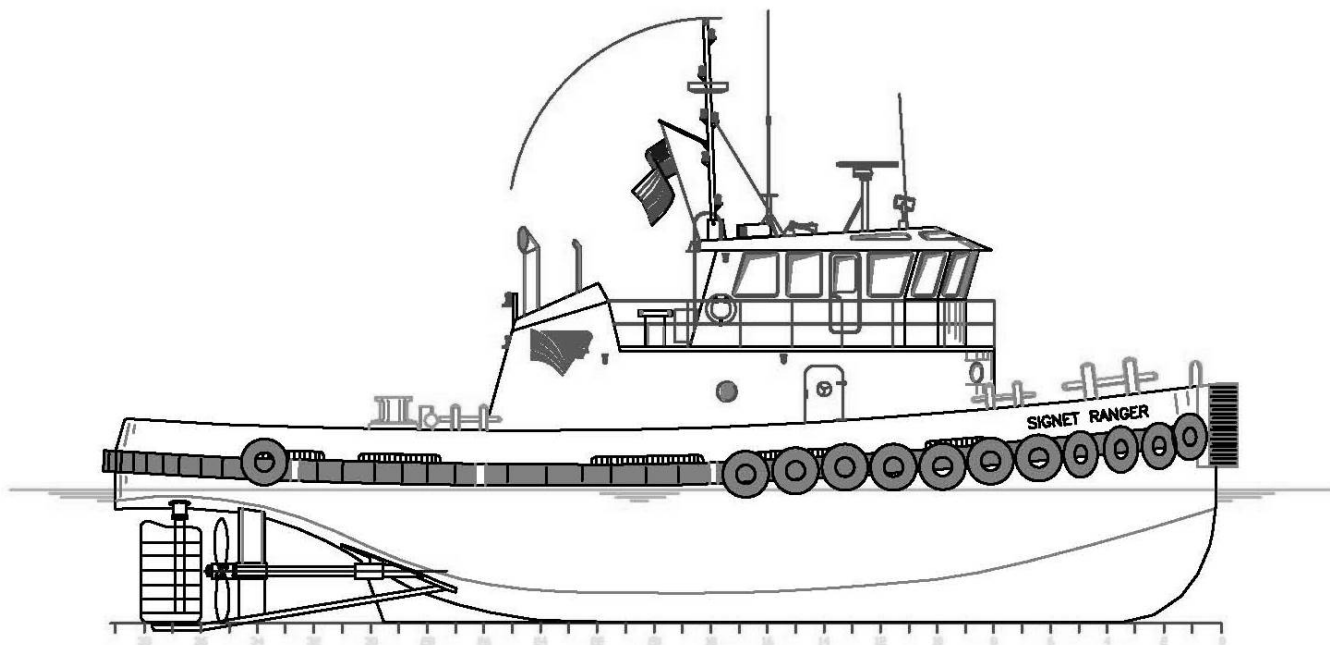
Signet Maritime Corporation

+1 713 840 1100

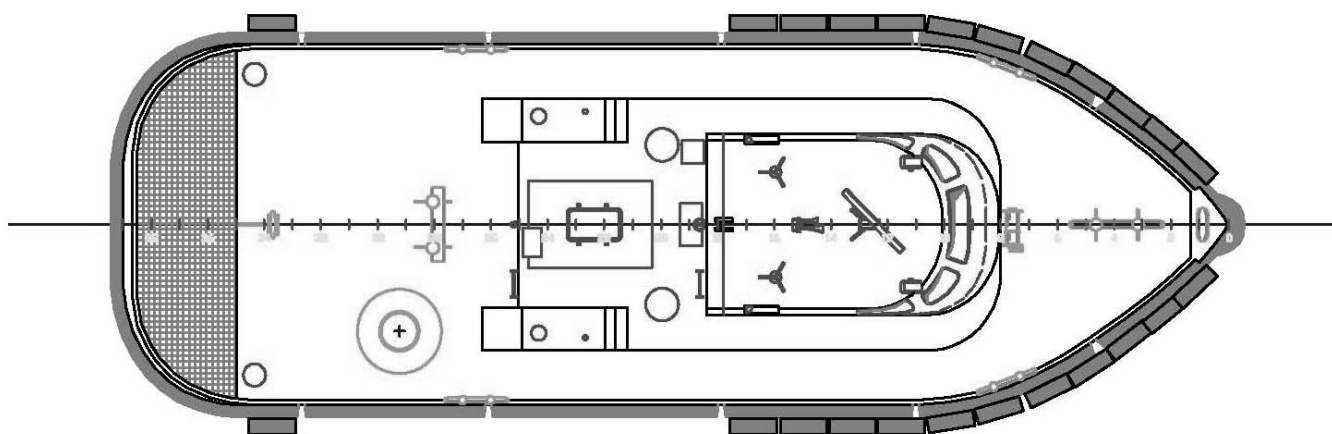
Shipping@SignetMaritime.com

SignetMaritime.com

Certified to ISO 9001:2008 • ISM • STCW 95 • MTSA • IMO SEEMP



Profile View



Plan View