



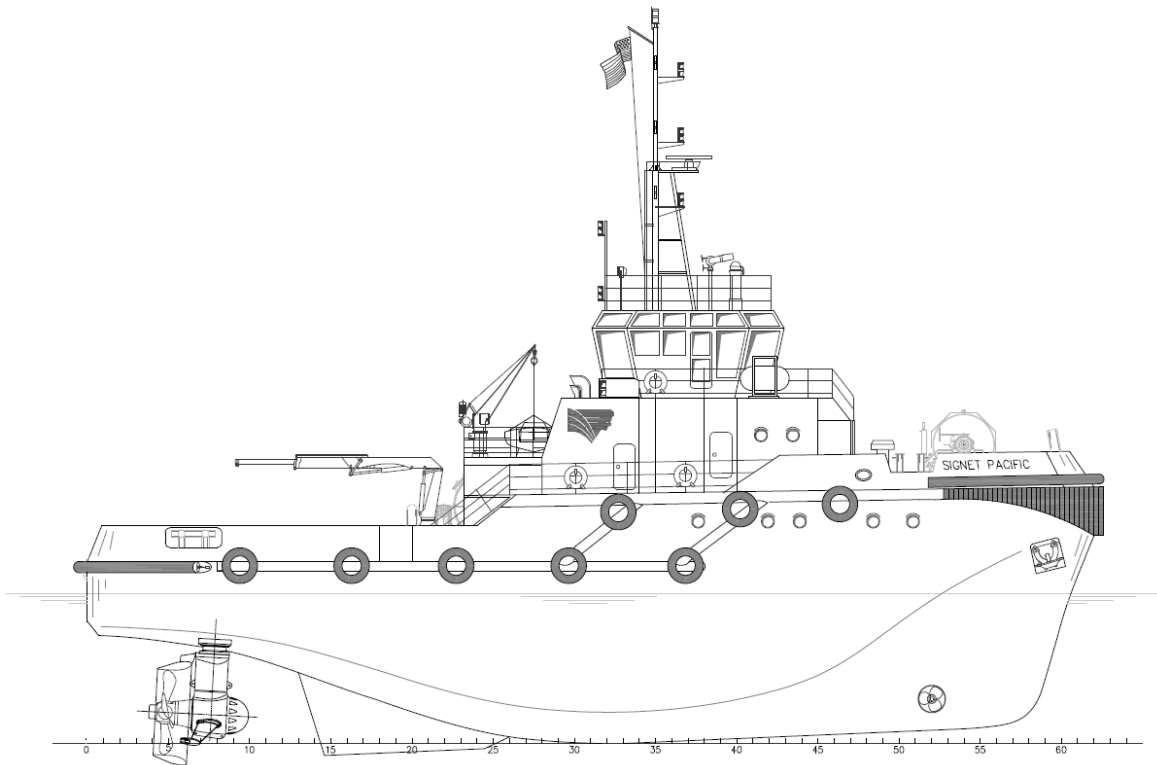
SIGNET PACIFIC

OWNER/CHARTERER	Signet Maritime Corporation Dubai, United Arab Emirates	BERTHING	12
DESIGNER	Guangdong Hope Yue Shipbuilding, China	PROPULSION	Two (2) Caterpillar Model 3516BHD
BUILDER	Guangdong Hope Yue Shipbuilding, China	HP/Engine	2,682
YEAR BUILT	2009	Total Horsepower	5,364
SERVICE	Anchor Handling-ASD Tug	Z-Drives	Two (2) Rolls Royce Aquamaster Model U5255CP
CLASSIFICATION	Lloyd's Register ✕100A1, ✕LMC, ✕ FiFi1	Propellers	Two (2) 102.4" (2,600 mm) Diameter 4-Blade NIBRAL in Kort Nozzles
OFFICIAL NUMBER	9499204	BOW THRUSTER	Caterpillar C7, 250 BHP
DIMENSIONS		GENERATORS	Two (2) Cummins Model 6CTA8.3
Molded Length	101'8"	Power	136 kW (each), 80V
Breadth	36'1"		One (1) Caterpillar Model 1104C.44TA6
Depth	18'4"	Power	69 kW, 380V
Deep Draft	15'1"	FIFI-1 SYSTEM	Two (2) FFS Pumps Model SFP 250x350
Height of Eye	26'	Prime Movers	Main Engines, Forward End
Gross Registered Tonnage	475	Monitors	Two (2) FFS Model 1200LB, Remote Controlled
CAPACITIES		BOLLARD PULL	
Fuel Oil	56,000 Gallons	Ahead	72 Metric Tonnes
Potable Water	17,000 Gallons	Astern	64 Metric Tonnes
WINCHES			
Forward Hawser	Split Drum, Hydraulic		
Aft Towing	Single Drum, Hydraulic		
LINE FOR VESSEL ASSIST	Two (2) 110m x 80 mm Polypropylene		
TOWING WIRE	One (1) 700m x 52 mm, Steel		

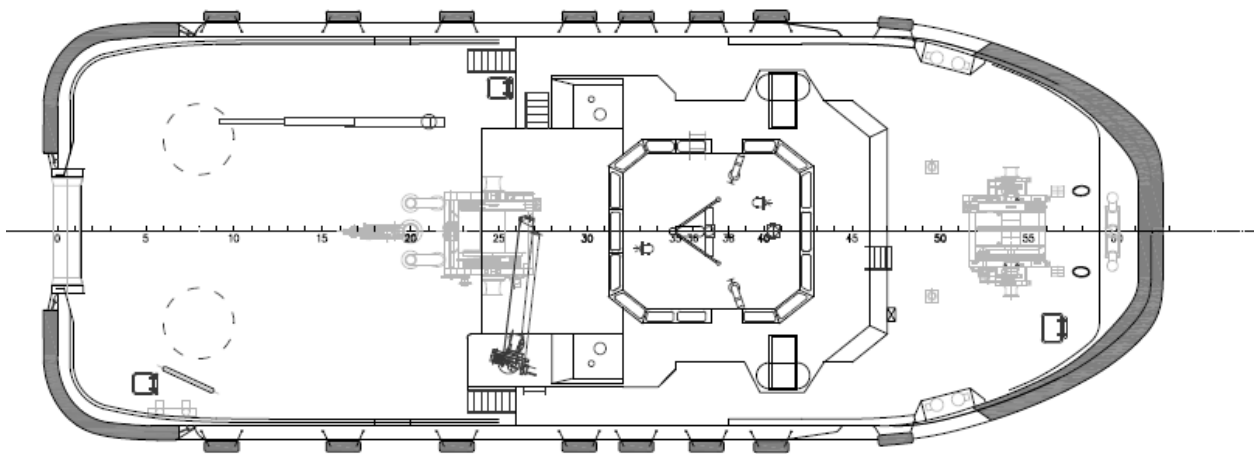
Signet Maritime Corporation
+1 361 776 7500

Shipping@SignetMaritime.com

www.signetmaritime.com



Profile View



Plan View