



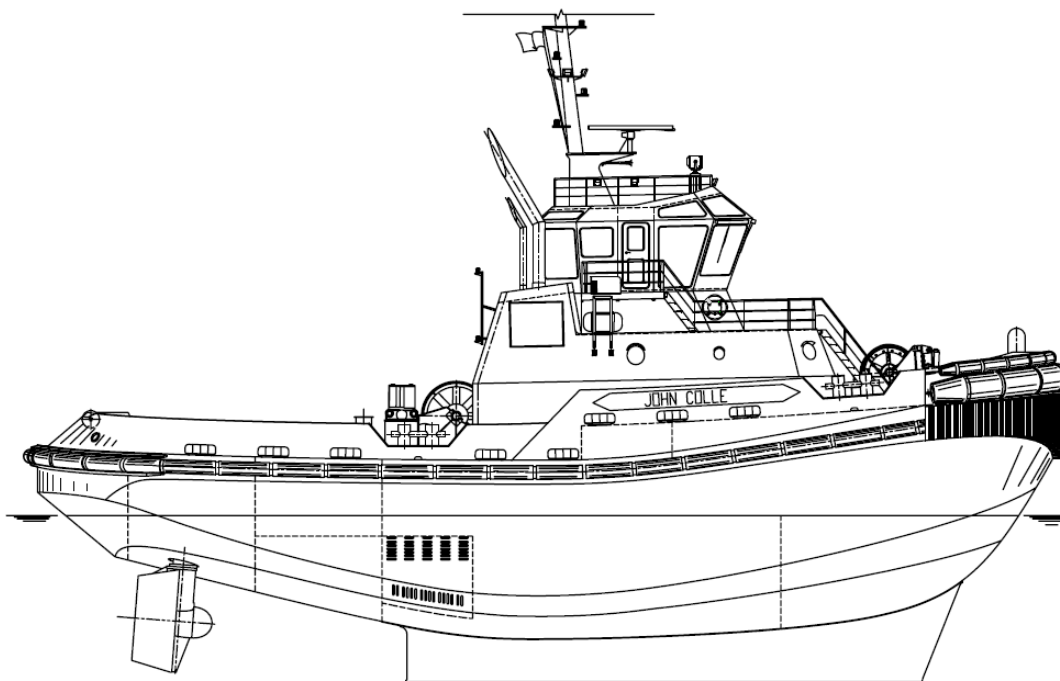
JOHN COLLE

OWNER/CHARTERER	Signet Maritime Corporation Pascagoula, Mississippi	BERTHING	8
FORMER OWNER	Colle Towing Company, Inc.	PROPULSION	Two (2) Caterpillar Model 3516B
DESIGNER	Robert Allan, Ltd. Vancouver, B.C. Canada	HP/Engine	2,500
BUILDER	Colle Shipyard Pascagoula, Mississippi	Total Horsepower	5,000
YEAR BUILT	2007	Z-Drives	Two (2) Rolls Royce Model US205
SERVICE	Harbor, Offshore Towing-ASD Tug	Propellers	Two (2) 94.5" Diameter (2,400 mm) 4-Blade Stainless Steel
CLASSIFICATION	ABS Loadline, FiFi1	GENERATORS	Two (2) Cummins 6 CTA 8.3 DM Two (2) Onan Generators, 125kW, 60Hz, 480V
OFFICIAL NUMBER	1205626	Power	
DIMENSIONS		FIFI SYSTEM	(1) Nijhuis Pump Model HGTF-1-350.650 (1) Cummins Model KTA50-M2 (2) FFS Model 1200LB, Remote Controlled
LOA	92'6"	Prime Mover	
Breadth	36'	Monitors	
Depth	17'2"	BOLLARD PULL	60.30 Metric Tonnes
Deep Draft	15'5"	WINCHES	
Height of Eye	25'	Hawser	Burrard Iron Works HE Hawser
Gross Registered Tonnage	475	Towing	HJ Single Drum Burrard Iron Works
Net Tonnage	165	LINE FOR VESSEL ASSIST	9" Samson Saturn 12
Lightship	446 long tons	Breaking Strength	340.0 Tonnes
CAPACITIES		TOWING WIRE	2 1/4" x 1500'
Fuel Oil	54,000 Gallons		
Potable Water	3,000 Gallons		

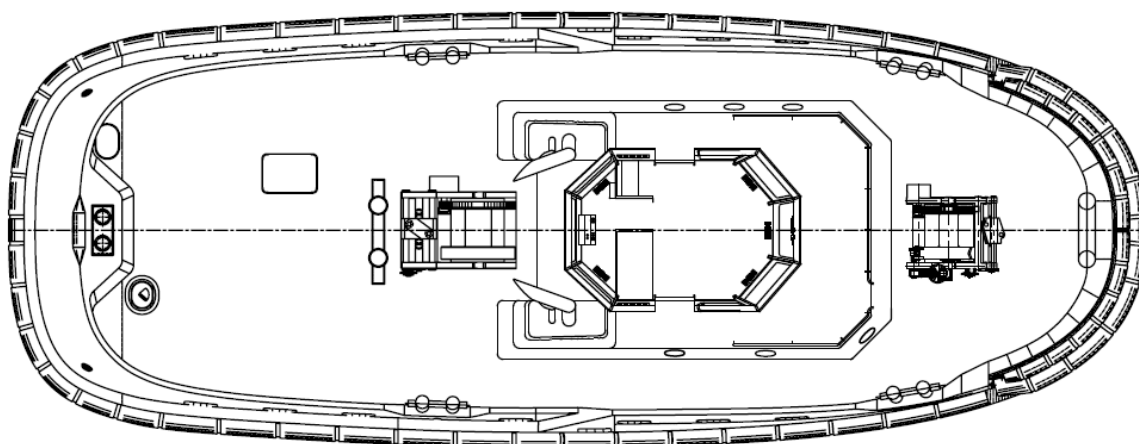
Signet Maritime Corporation
+1 228 762 5700

Shipping@SignetMaritime.com
www.SignetMaritime.com

Certified to ISO 9001:2008, ISM, STCW 95, MTSA, AWO-RCP



Profile View



Plan View

www.SignetMaritime.com

Certified to ISO 9001:2008, ISM, STCW 95, MTSA, AWO-RCP