



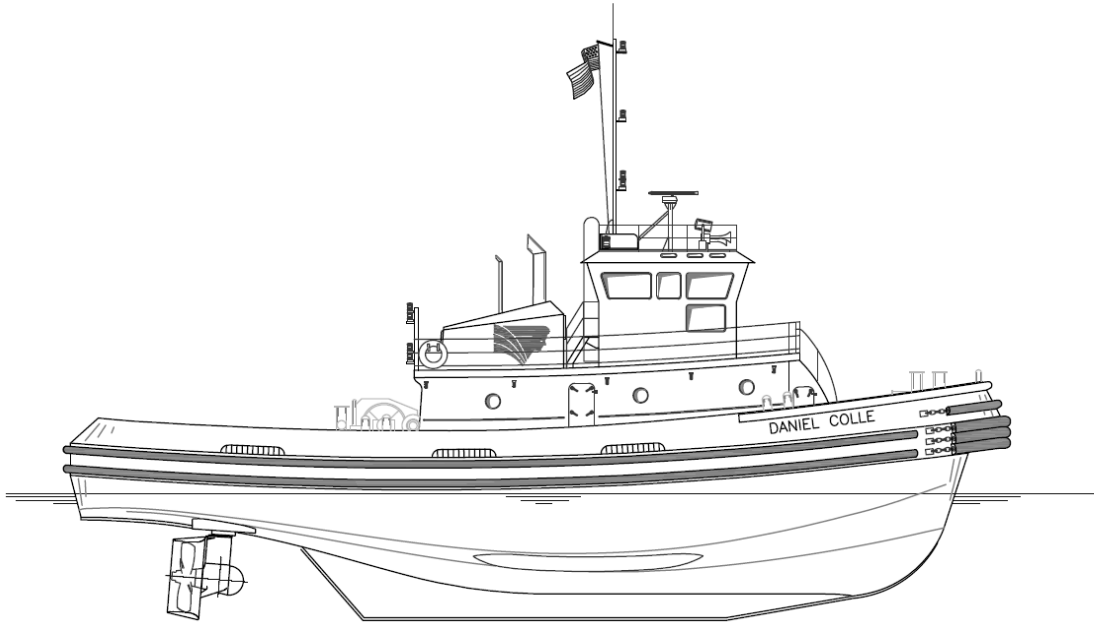
DANIEL COLLE

OWNER/CHARTERER	Signet Maritime Corporation Pascagoula, Mississippi	BERTHING	3
FORMER OWNER	Colle Towing Company, Inc.	PROPULSION	Two (2) EMD Model 12-645E6
DESIGNER	Aquaaster	HP/Engine	1,500
BUILDER	Colle Shipyard Pascagoula, Mississippi	Total Horsepower	3,000
YEAR BUILT	2001	Z-Drives	Two (2) AquaMaster Model US1701
SERVICE	Harbor, Ocean Towing-ASD Tug	Propellers	Two (2) 84.6" x 70.67" 4-Blade Stainless Steel
CLASSIFICATION	ABS Loadline	GENERATORS	Two (2) Cummins 6B5.9 50kW, 60Hz
OFFICIAL NUMBER	1115336	Power	Two (2) Marathon Generators
DIMENSIONS		EST. BOLLARD PULL	42.5 Metric Tonnes
LOA	81'6"	WINCHES	
Breadth	32'	Towing	Markey TDS-28
Depth	16'	LINE FOR VESSEL ASSIST	11" Samson Ultra Blue-8
Deep Draft	13'	TOWING WIRE	1 3/4" x 2200'
Height of Eye	25'		
Gross Registered Tonnage	215		
CAPACITIES			
Fuel Oil	34,000 Gallons		
Potable Water	2,750 Gallons		

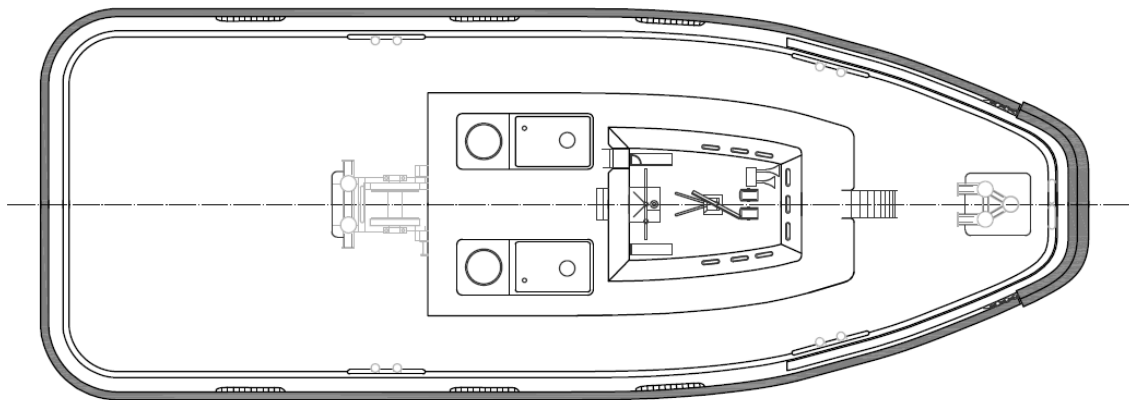
Signet Maritime Corporation
+1 228 762 5700

Shipping@SignetMaritime.com
www.SignetMaritime.com

Certified to ISO 9001:2008, ISM, STCW 95, MTSA, AWO-RCP



Profile View



Plan View