

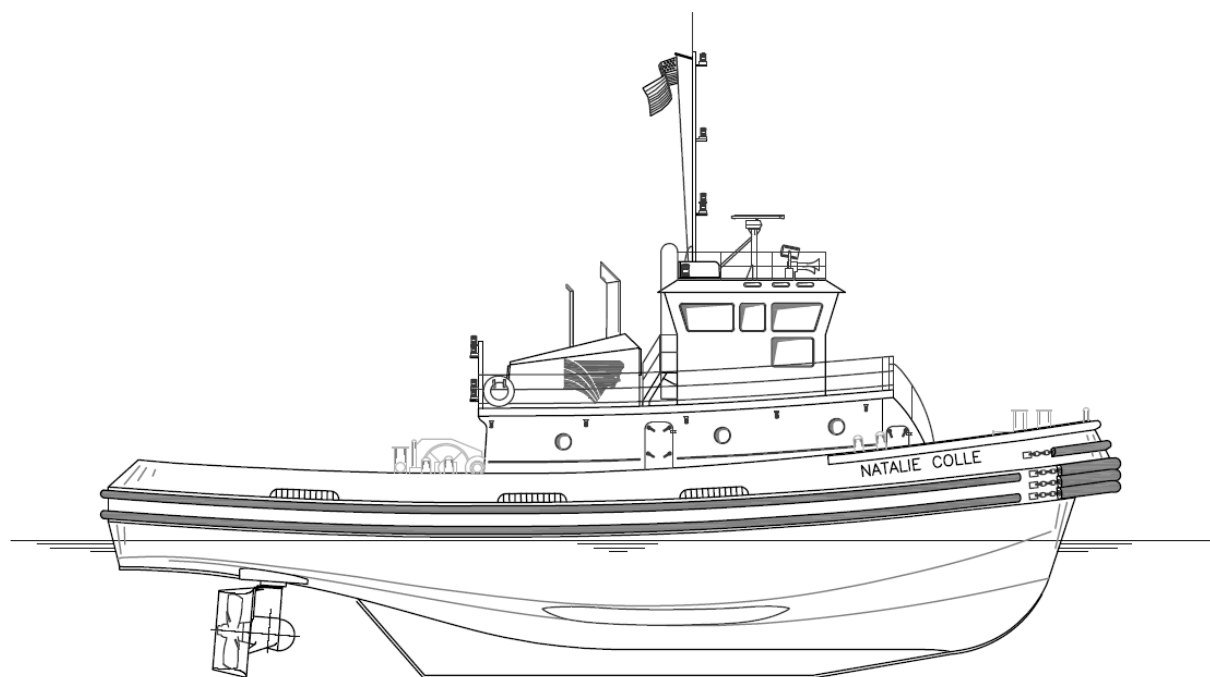


NATALIE COLLE

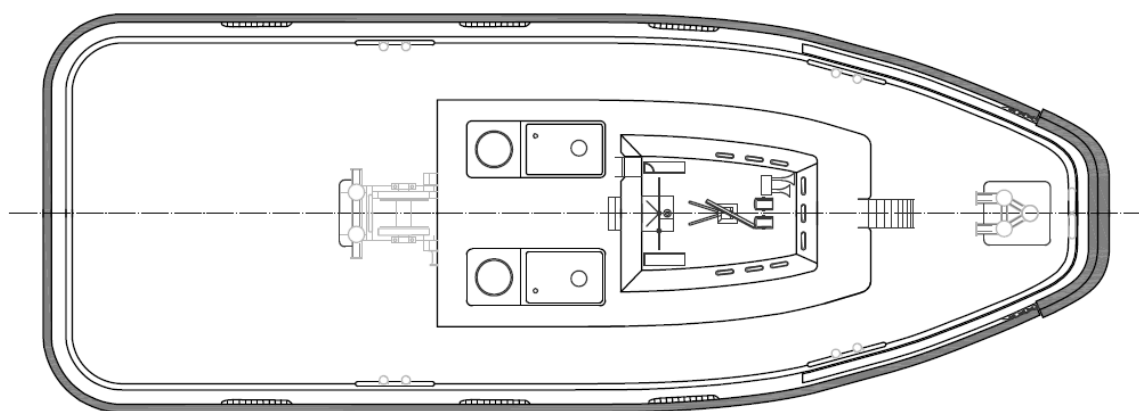
OWNER/CHARTERER	Signet Maritime Corporation Pascagoula, Mississippi	BERTHING	5
FORMER OWNER	Colle Towing Company, Inc.	PROPULSION	Two (2) EMD Model 12-645E6
DESIGNER	Aquamaster	HP/Engine	1,500
BUILDER	Colle Shipyard Pascagoula, Mississippi	Total Horsepower	3,000
YEAR BUILT	1994	Z-Drives	Two (2) Ulstein Model 1350H
SERVICE	Harbor, Ocean Towing-ASD Tug	Propellers	Two (2) 80" x 68" 4-Blade Stainless Steel
CLASSIFICATION	ABS Loadline	GENERATORS	Two (2) Detroit Diesel 4-71 Two (2) Reliance Electric 50 kW
OFFICIAL NUMBER	1027362	Power	
DIMENSIONS		EST. BOLLARD PULL	42.5 Metric Tonnes
LOA	81'6"	WINCHES	
Breadth	32'	Towing	Intercon 78155 Single Drum
Depth	16'	LINE FOR VESSEL ASSIST	11" Samson Ultra Blue-8
Deep Draft	13'	TOWING WIRE	1½" x 1000'
Height of Eye	25'		
Gross Registered Tonnage	215		
CAPACITIES			
Fuel Oil	34,000 Gallons		
Potable Water	2,750 Gallons		
Lube Oil Storage	680 Gallons		

Signet Maritime Corporation
+1 228 762 5700

Shipping@SignetMaritime.com
www.SignetMaritime.com



Profile View



Plan View