



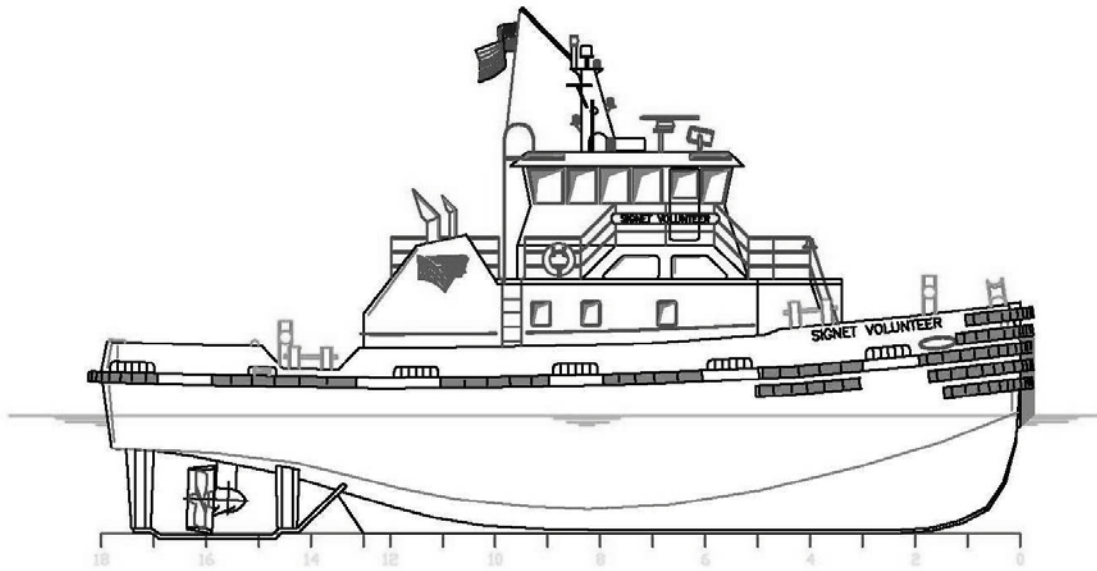
SIGNET VOLUNTEER

OWNER/ CHARTERER	Signet Maritime Corporation Ingleside, Texas	BERTHING	6
FORMER OWNER	Dixie Towing Corp.	PROPULSION	Two (2) Cummins Model KTA-19M3
DESIGNER	Glowacki Engineering Orange Park, FL	HP/Engine	600
BUILT	Horizon-Bayou La Batre, AL	Total Horsepower	1,200
YEAR BUILT	2001	Z-Drives	Two (2) Rolls Royce Model 370H
SERVICE	Harbor, ASD Tug	PTOs	Two (2) Twin Disc Model HPTO-366
OFFICIAL NUMBER	1106302	Propellers	Two (2) 52" x 46" 4-Blade NIBRAL
DIMENSIONS		GENERATORS	Two (2) Cummins Model 4B 3.9
LOA	70'	Power	35 kW (each), 60Hz, 208V
Breadth	26'	BOLLARD PULL	
Depth	11'	Ahead	14 Metric Tonnes
Deep Draft	9'	Astern	13 Metric Tonnes
Height of Eye	18'5"	WINCHES	
Gross Registered Tonnage	146	Push Wire	Two (2) Patterson WWP40E with Amsteel Blue 1-1/2" x 130'
CAPACITIES		LINE FOR DOCKING SHIPS	Amsteel Blue 1 1/4" Diameter 3 3/4" Circumference 302,000 Breaking Strength
Fuel Oil	20,968 Gallons		
Potable Water	5,992 Gallons		
Lube Oil Storage	432 Gallons		
Hydraulic Oil Storage	432 Gallons		

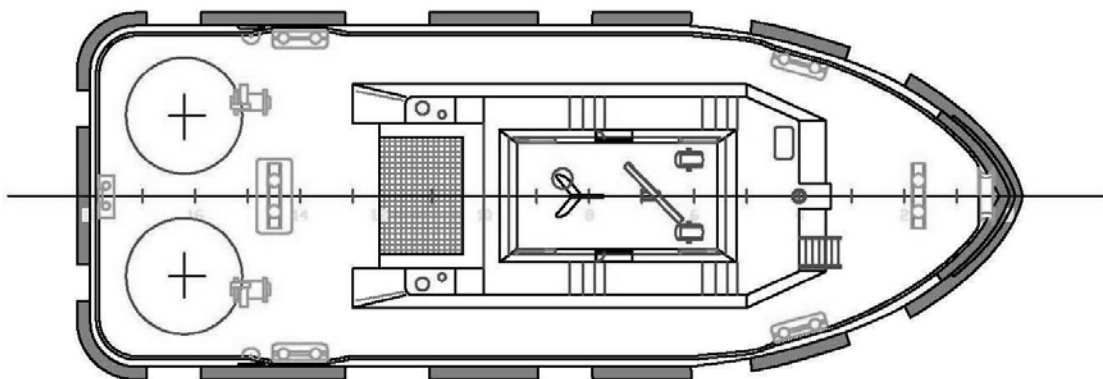
Signet Maritime Corporation
+1 361 776 7500

Shipping@SignetMaritime.com
www.signetmaritime.com

Certified to ISO 9001:2008, ISM, STCW 95, MTSA, AWO-RCP



Profile View



Plan View