



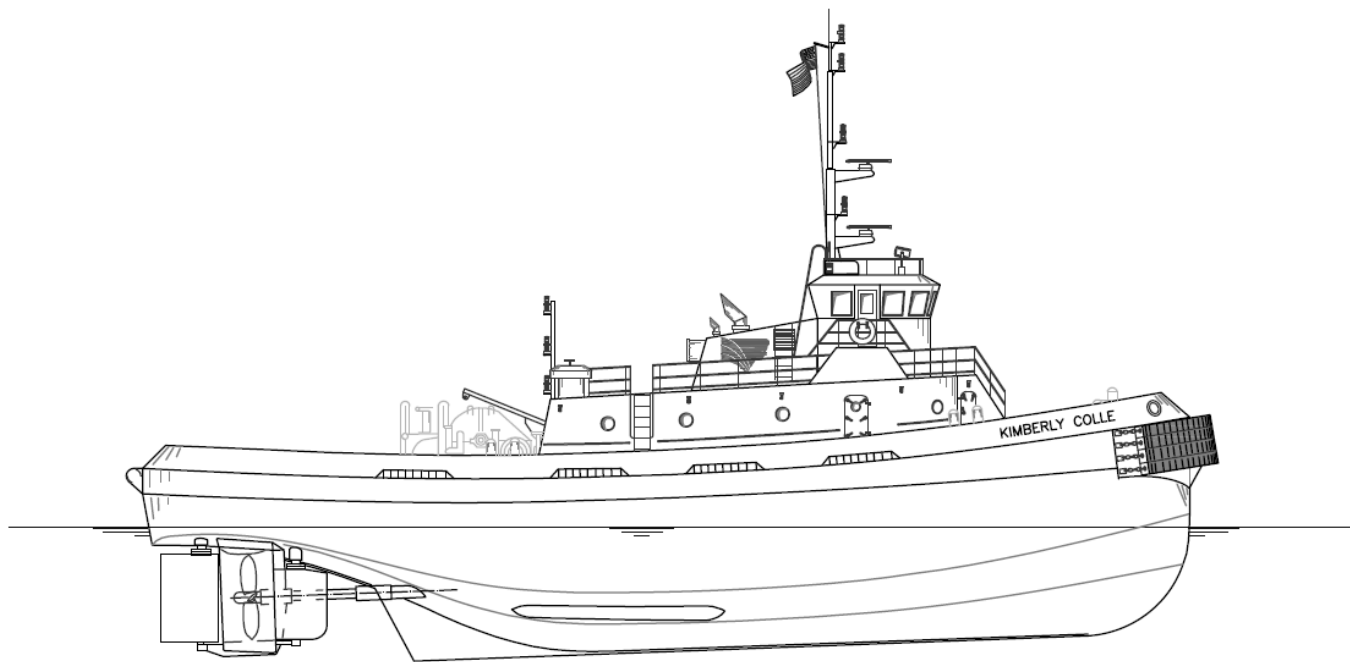
KIMBERLY COLLE

OWNER/CHARTERER	Signet Maritime Corporation Pascagoula, Mississippi	BERTHING	4
FORMER OWNER	Colle Towing Company, Inc.	PROPULSION	Two (2) EMD Model 12-645E6
DESIGNER	Main Iron Works Houma, Louisiana	HP/Engine	2,100
BUILDER	Main Iron Works Houma, Louisiana	Total Horsepower	4,200
YEAR BUILT	1998	Reduction Gears	Two (2) Reintjes Model WAF1961
SERVICE	Ocean Towing, Harbor Tug	Propellers	Two (2) 108" x 117" 4-Blade Stainless Steel
CLASSIFICATION	ABS Loadline	GENERATORS	GM 6-71, 75kW
OFFICIAL NUMBER	1070115	Power	KATO
DIMENSIONS		EST. BOLLARD PULL	59.5 Metric Tonnes
LOA	103'5"	WINCHES	
Breadth	34'5"	Towing	Skagit SMATCO Double Drum 66-DPDT-170
Depth	18'	LINE FOR VESSEL ASSIST	12" Samson Ultra Blue-8
Deep Draft	14'	TOWING WIRE	2 ¼" x 2000'
Height of Eye	25'		
Gross Registered Tonnage	385		
CAPACITIES			
Fuel Oil	97,277 Gallons		
Potable Water	6,000 Gallons		
Lube Oil Storage	400 Gallons		

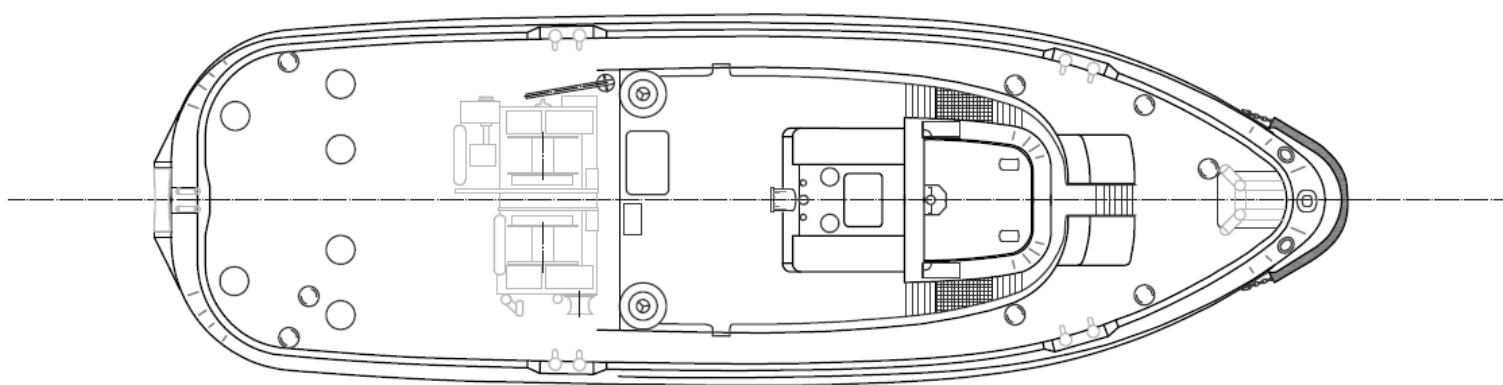
Signet Maritime Corporation
+1 228 762 5700

Shipping@SignetMaritime.com
www.SignetMaritime.com

Certified to ISO 9001:2008, ISM, STCW 95, MTSA, AWO-RCP



Profile View



Plan View