

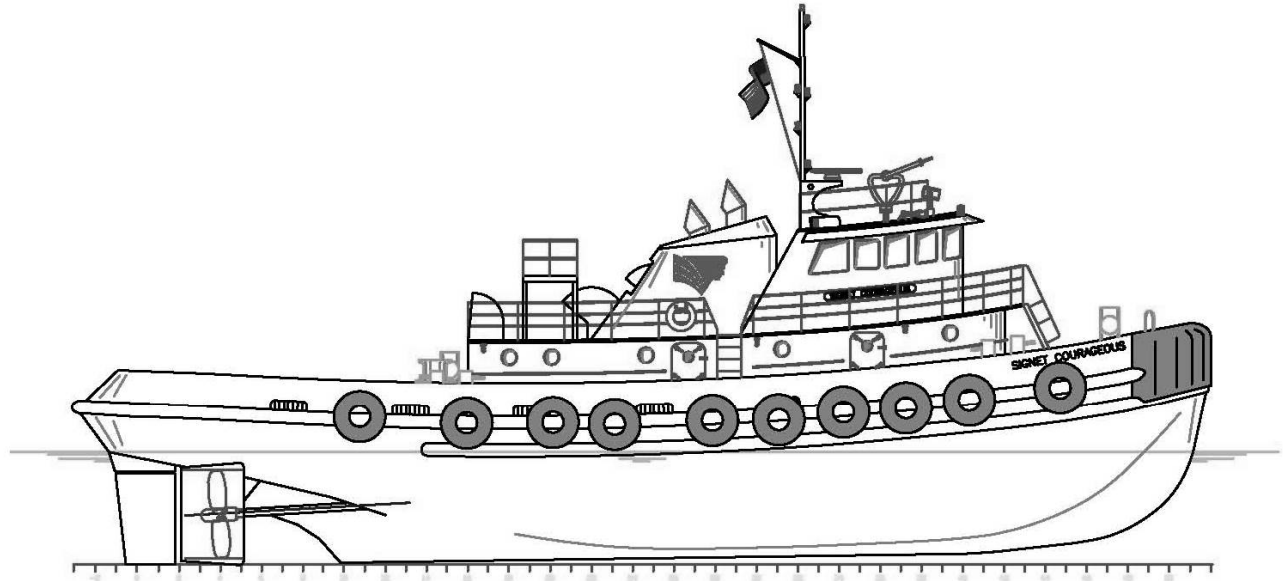


SIGNET COURAGEOUS

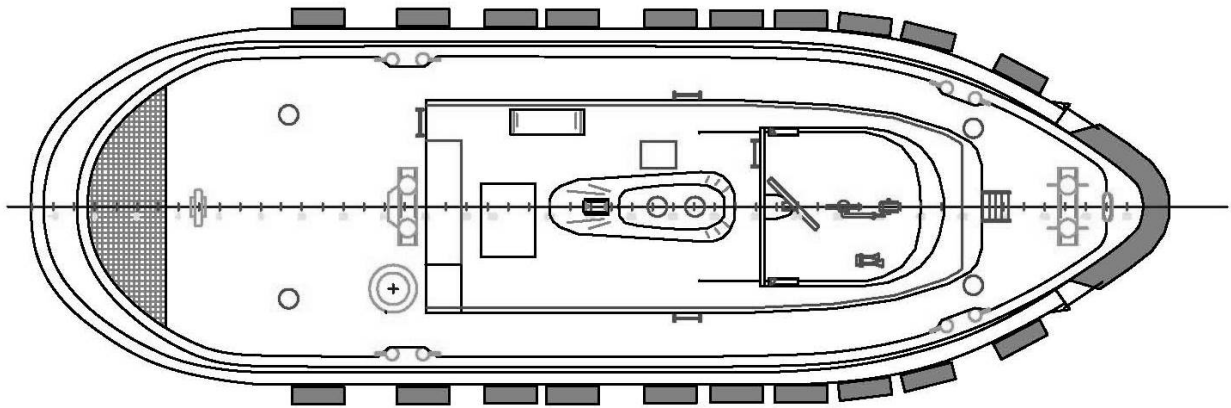
OWNER/ CHARTERER	Signet Maritime Corporation Brownsville, Texas	BERTHING	6
FORMER OWNER	El Paso Tankships USA	PROPULSION	Two (2) EMD Model 12-645-E2
BUILT	Main Iron Works, Houma, LA	HP/Engine	1,500
YEAR BUILT	1975	Total Horsepower	3,000
REBUILT	Corpus Christi, 2004	Reduction Gears	Two (2) Falk Model 1230MRD-C
CLASSIFICATION	ABS ✕ A1, ✕ AMS	Propellers	Two (2) 92" x 68" 2-4 Blade in Nozzles
SERVICE	Harbor Tug	GENERATORS	Two (2) Detroit Diesel Model 6-71
OFFICIAL NUMBER	568354	Power	75 kW (each), 60Hz, 480V
DIMENSIONS		BOLLARD PULL	44 Metric Tonnes
LOA	90'	DECK EQUIPMENT	Capstan Bensen Electric, 40 HP
Breadth	28'	FIRE MONITOR	Detroit Diesel 6-71 Flow: 2,000 GPM Total Dynamic Head: 262'
Depth	15'	LINE FOR DOCKING SHIPS	600' Quantum 8 2½" Diameter 7½" Circumference 453,000 Average Strength
Deep Draft	12'		
Height of Eye	18'5"		
Gross Registered Tonnage	152		
CAPACITIES			
Fuel Oil	26,000 Gallons		
Potable Water	4,000 Gallons		
Lube Oil Storage	400 Gallons		

Signet Maritime Corporation
+1 361 776 7500

Shipping@SignetMaritime.com
www.signetmaritime.com



Profile View



Plan View