

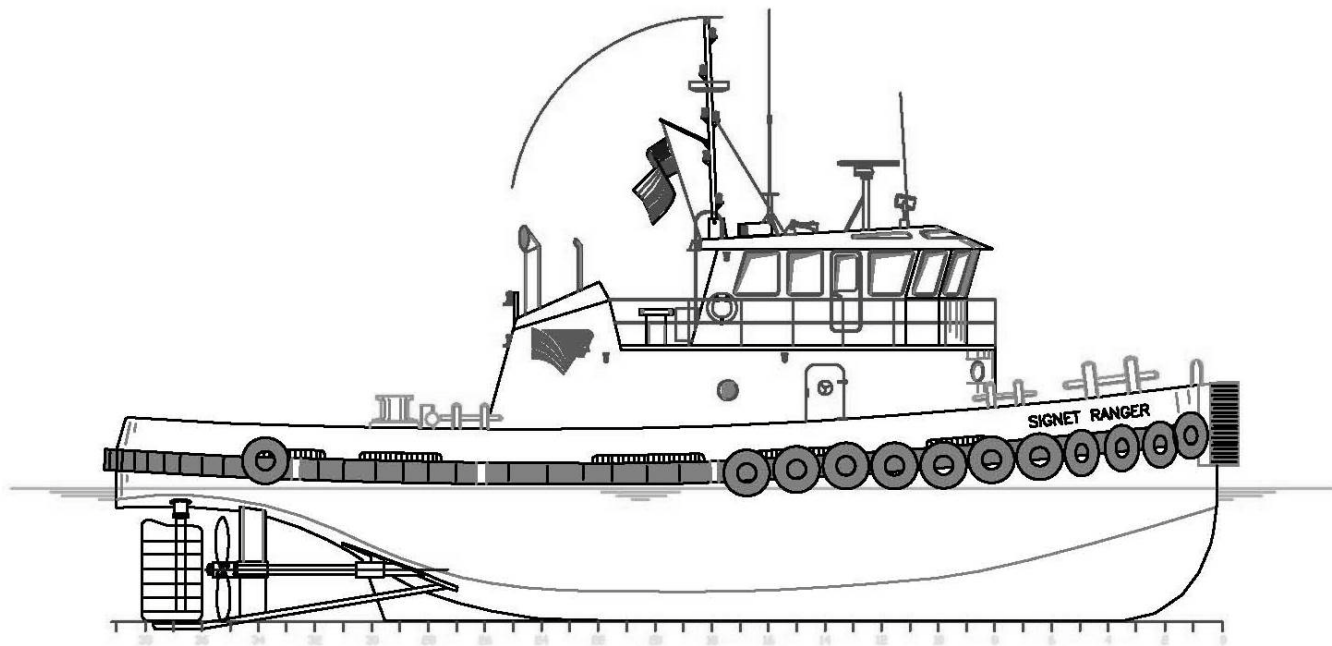


SIGNET RANGER

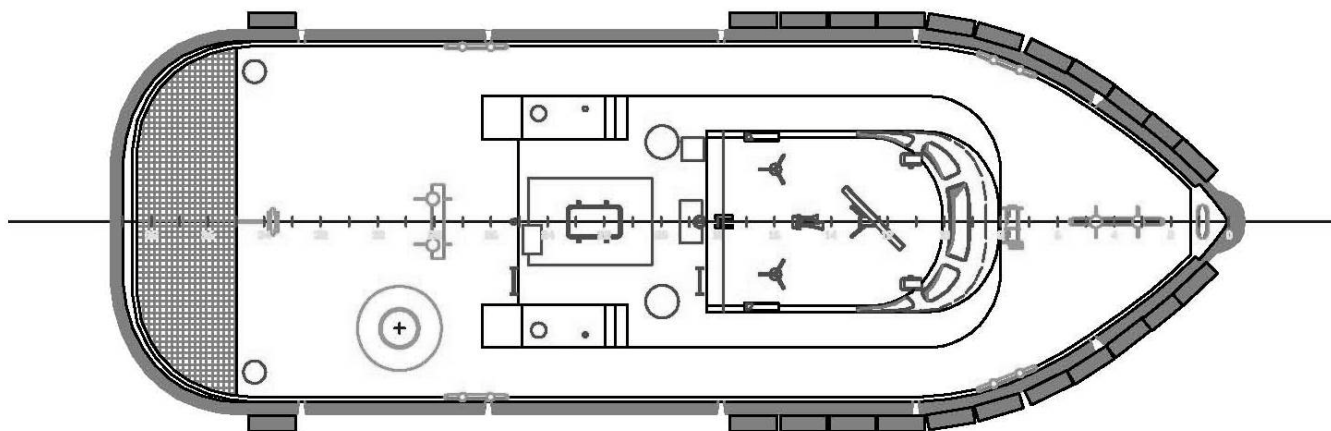
OWNER/ CHARTERER	Signet Maritime Corporation Brownsville, Texas	BERTHING	4
FORMER OWNER	Cetacean Marine, Inc.	PROPULSION	Two (2) CAT Model 3512B
DESIGNER	A&B Industries, Amelia, LA	HP/Engine	1,500
BUILT	A&B Industries, Amelia, LA	Total Horsepower	3,000
YEAR BUILT	2004	Reduction Gears	Two (2) Twin Disc Model MG5600
SERVICE	Harbor Tug	Propellers	Two (2) 86" x 55" 2-5 Blade Aqualloy
OFFICIAL NUMBER	1152107	GENERATORS	Two (2) CAT Model 3054T
DIMENSIONS		Power	72 kW, 208V, 60Hz
LOA	82'	BOLLARD PULL	36 Metric Tonnes
Breadth	26'	DECK EQUIPMENT	Capstan McElroy/Catchot 21" Hydraulic, 30 HP
Depth	11'	LINE FOR DOCKING SHIPS	12 x 12 Strand 2¼ Diameter 7" Circumference 317,700 Minimum Tensile Strength
Deep Draft	9'		
Height of Eye	16'5"		
Gross Registered Tonnage	98		
CAPACITIES			
Fuel Oil	37,000 Gallons		
Potable Water	5,000 Gallons		
Lube Oil Storage	150 Gallons		
Dirty Oil Storage	150 Gallons		

Signet Maritime Corporation
+1 361 776 7500

Shipping@SignetMaritime.com
www.signetmaritime.com



Profile View



Plan View