

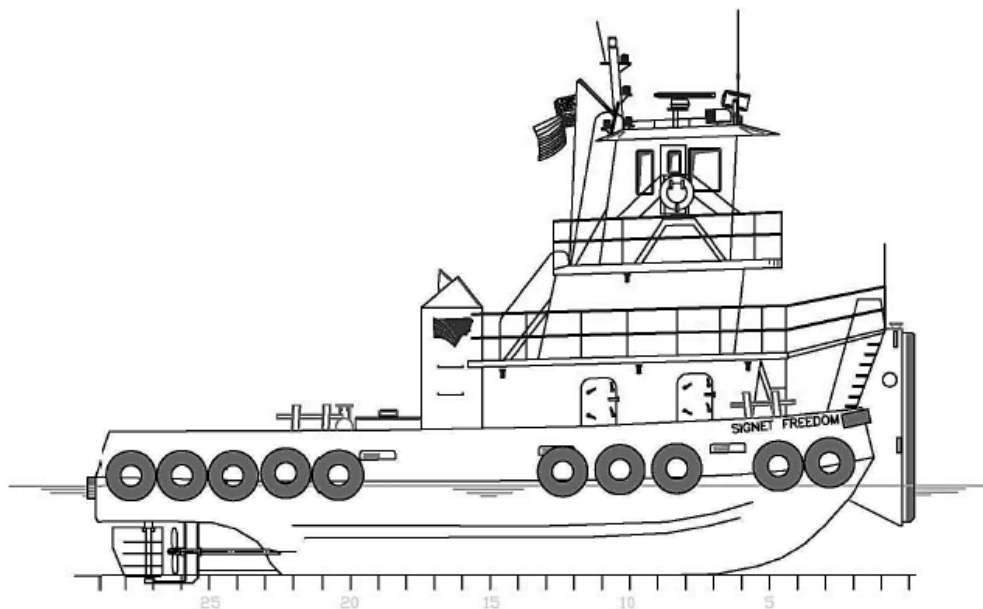


## SIGNET FREEDOM

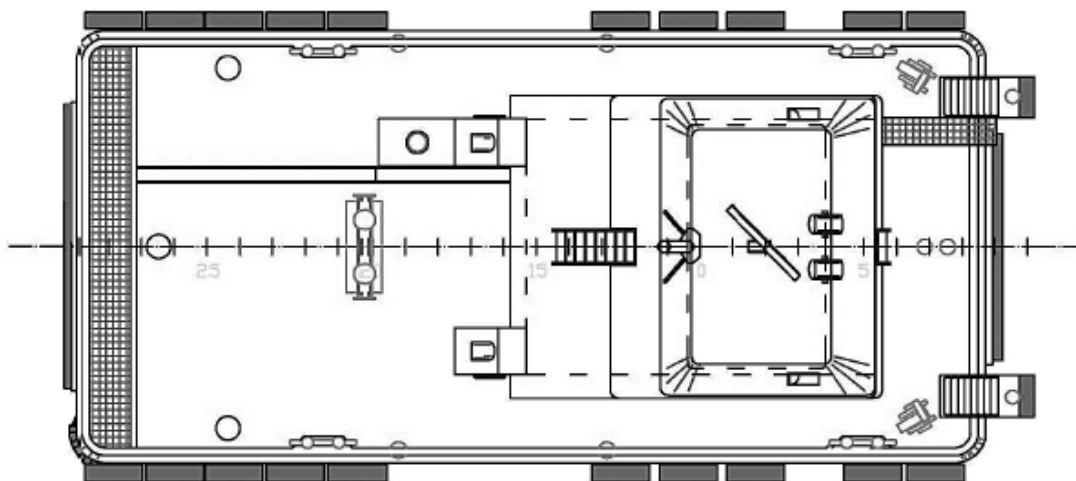
<b>OWNER/ CHARTERER</b>	Signet Maritime Corporation Ingleside, Texas	<b>BERTHING</b>	6
<b>FORMER OWNER</b>	Basin Offshore, Inc.	<b>PROPULSION</b>	Two (2) Cummins Model KTA-19M3
<b>BUILT</b>	Sun Towing, Morgan City, LA	HP/Engine	640
<b>YEAR BUILT</b>	1997	Total Horsepower	1,280
<b>REBUILT</b>	Morgan City, Louisiana 1999	Reduction Gears	Two (2) Twin Disc Model MG-5202DC
<b>SERVICE</b>	Inland Push Boat	Propellers	Two (2) 60.5" x 64" 4-Blade Aqualloy
<b>OFFICIAL NUMBER</b>	1051793	<b>GENERATORS</b>	John Deere 4045 DFM
<b>DIMENSIONS</b>		Power	40kW 60Hz, 208V
LOA	60'	<b>BOLLARD PULL</b>	13 Metric Tonnes
Breadth	26'	<b>WINCHES</b>	
Depth	8'	Push Wire	Two (2) Patterson WWP40E with Amsteel Blue 1-1/2" x 130'
Deep Draft	8'		
Height of Eye	24'7"		
Gross Registered Tonnage	104		
<b>CAPACITIES</b>			
Fuel Oil	16,000 Gallons		
Potable Water	5,000 Gallons		
Lube Oil Storage	60 Gallons		
Gear Oil Storage	60 Gallons		

Signet Maritime Corporation  
+ 1 361 776 7500

[Shipping@SignetMaritime.com](mailto:Shipping@SignetMaritime.com)  
[www.signetmaritime.com](http://www.signetmaritime.com)



Profile View



Plan View

[www.signetmaritime.com](http://www.signetmaritime.com)

Certified to ISO 9001:2008, ISM, STCW 95, MTSA, AWO-RCP