

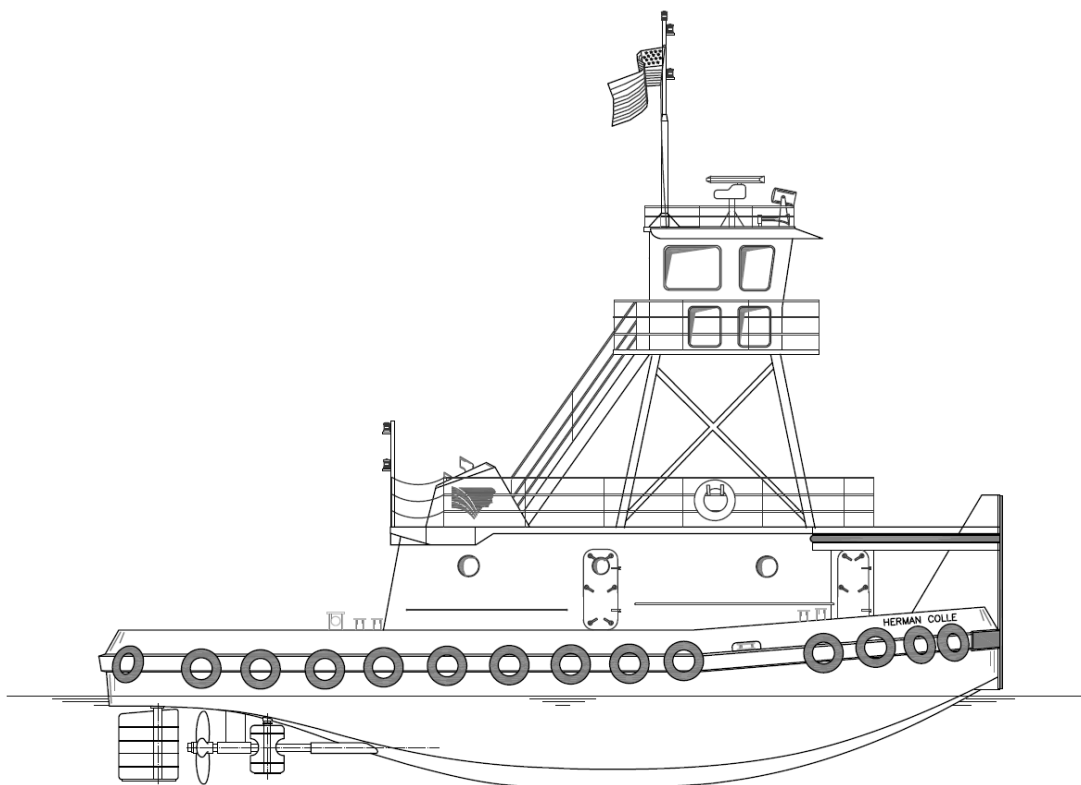


## HERMAN COLLE

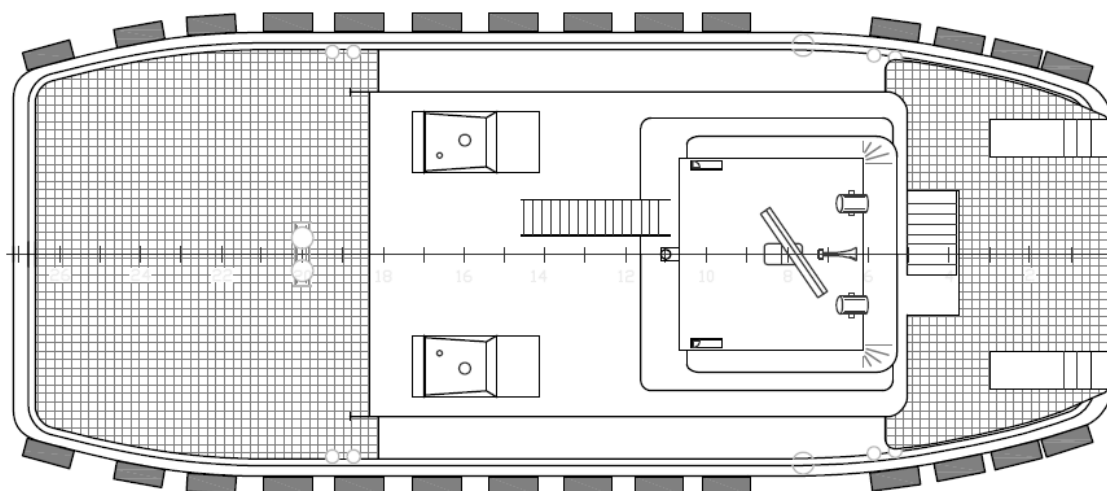
<b>OWNER/CHARTERER</b>	Signet Maritime Corporation Pascagoula, Mississippi	<b>BERTHING</b>	4
<b>FORMER OWNER</b>	Colle Towing Company, Inc.	<b>PROPULSION</b>	Two (2) Cummins Model QSM11
<b>DESIGNER</b>	Entech & Associates, Inc. Houma, Louisiana	HP/Engine	355
<b>BUILDER</b>	Colle Shipyard Pascagoula, Mississippi	Total Horsepower	710
<b>YEAR BUILT</b>	1999	Reduction Gears	Two (2) Twin Disc Model MG514
<b>SERVICE</b>	Inland Push Boat	Propellers	Two (2) 58" x 52" 4-Blade Stainless Steel
<b>OFFICIAL NUMBER</b>	1091515	<b>GENERATORS</b>	Two (2) Cummins 4B3.9-D(M) Two (2) Marathon Electric Magna-Plus 30kW each
<b>DIMENSIONS</b>		<b>EST. BOLLARD PULL</b>	8.1 Metric Tonnes
LOA	54'	<b>WINCHES</b>	
Breadth	22'	Push Wire	Two (2) Patterson WWP-30E-5-10
Depth	8'	<b>PUSH WIRE</b>	7/8" x 106'
Deep Draft	7'5"		
Height of Eye	28'		
Gross Registered Tonnage	79		
<b>CAPACITIES</b>			
Fuel Oil	9,000 Gallons		
Potable Water	10,000 Gallons		
Lube Oil Storage	77 Gallons		

Signet Maritime Corporation  
+1 228 762 5700

[Shipping@SignetMaritime.com](mailto:Shipping@SignetMaritime.com)  
[www.SignetMaritime.com](http://www.SignetMaritime.com)



Profile View



Plan View