

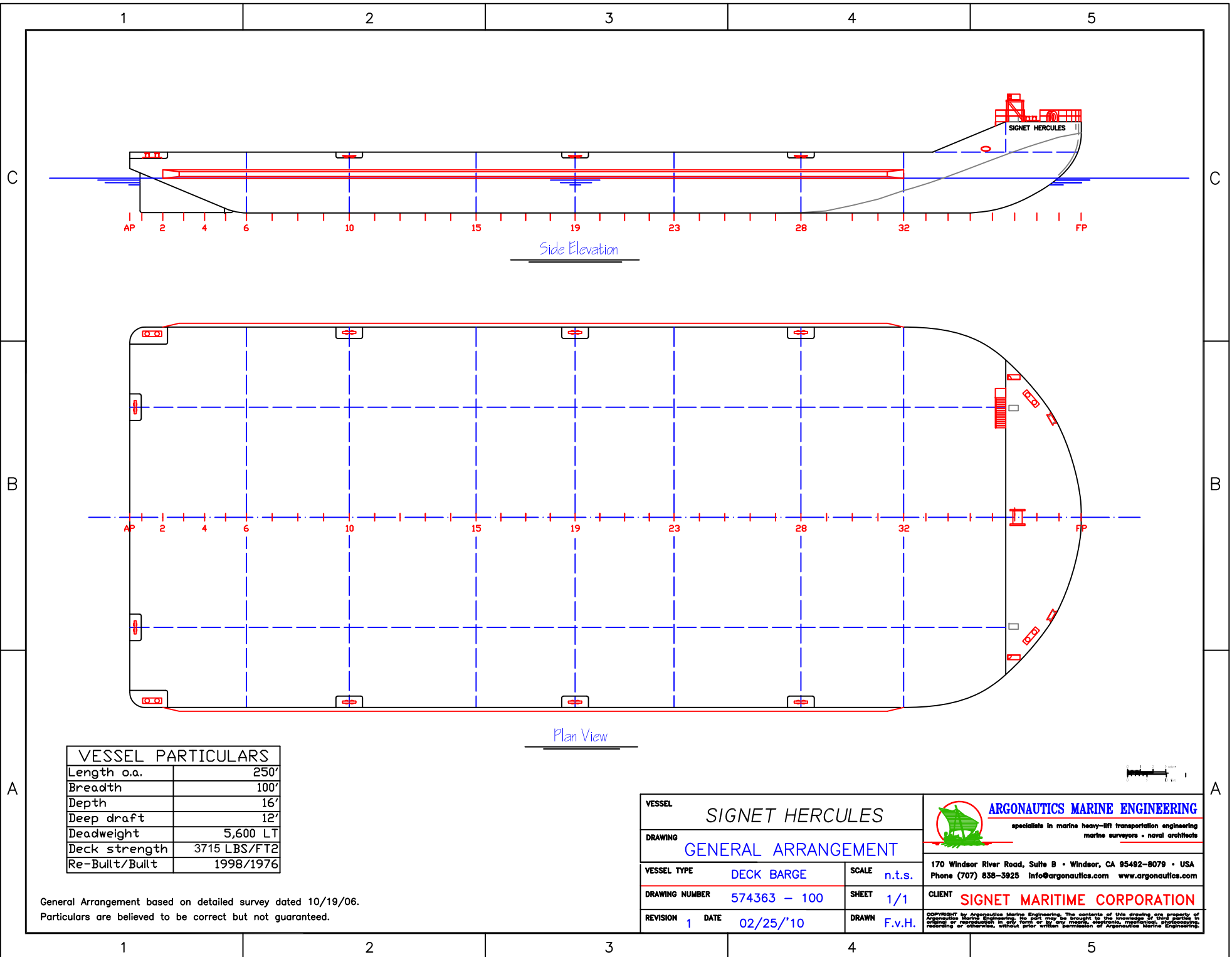


## SIGNET HERCULES

<b>OWNER/ CHARTERER</b>	Signet Maritime Corporation Ingleside, Texas
<b>FORMER OWNER</b>	General Dynamics Corp.
<b>BUILT</b>	Quincy, MA
<b>YEAR BUILT</b>	1976
<b>REBUILT</b>	1998 New Orleans, LA
<b>SERVICE</b>	Ocean Deck Barge
<b>OFFICIAL NUMBER</b>	574363
<b>DIMENSIONS</b>	
LOA	250'
Breadth	100'
Depth	16'
Deep Draft	12'
Gross	2,946
Net	883
Lightship	1,613
<b>DEADWEIGHT</b>	5,611
<b>CLEAR DECK AREA</b>	23,100 square feet
<b>DECK STRENGTH</b>	3,715#, 2,345#

Signet Maritime Corporation  
International Operations Center  
+1 361 776 7500

[Shipping@SignetMaritime.com](mailto:Shipping@SignetMaritime.com)  
[www.signetmaritime.com](http://www.signetmaritime.com)




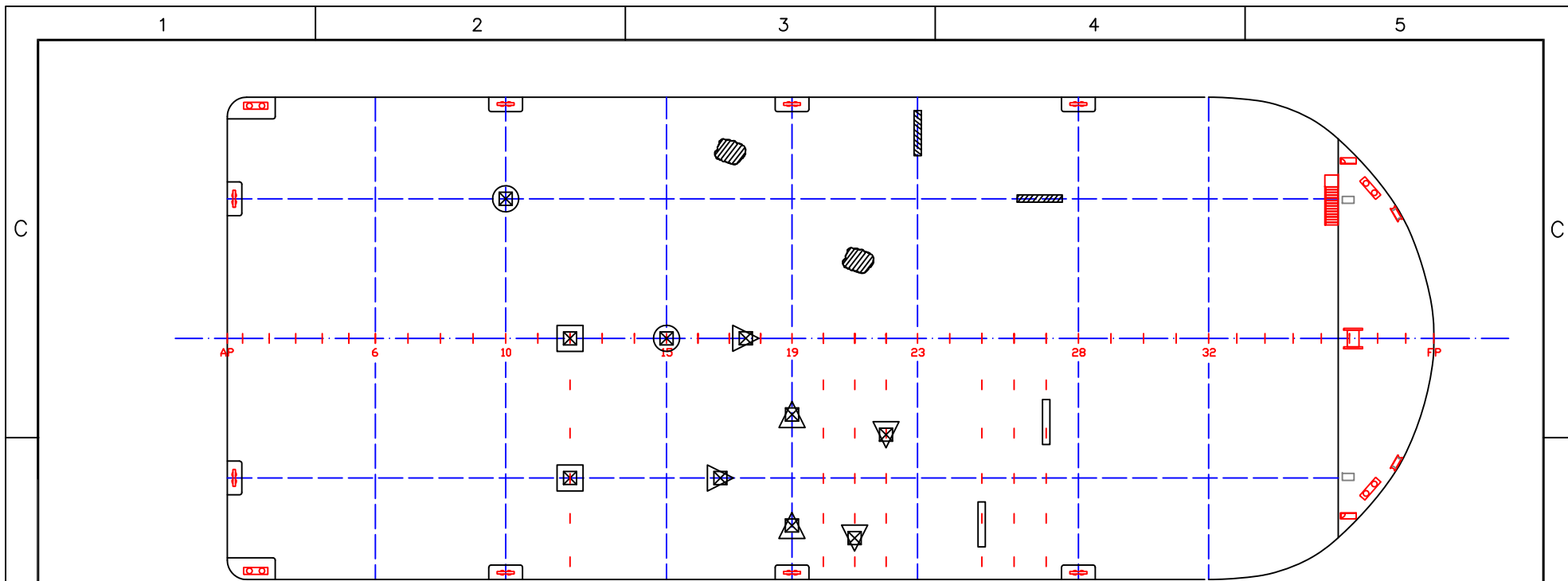
Side Elevation

Plan View








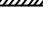
VESSEL PARTICULARS	
Length o.a.	250'
Breadth	100'
Depth	16'
Deep draft	12'
Deadweight	5,600 LT
Deck strength	3715 LBS/FT <sup>2</sup>
Re-Built/Built	1998/1976

General Arrangement based on detailed survey dated 10/19/06.  
Particulars are believed to be correct but not guaranteed.

VESSEL <b>SIGNET HERCULES</b>		 <b>ARGONAUTICS MARINE ENGINEERING</b> specialists in marine heavy-lift transportation engineering marine surveyors • naval architects
DRAWING <b>GENERAL ARRANGEMENT</b>		
VESSEL TYPE DECK BARGE	SCALE n.t.s.	170 Windsor River Road, Suite B • Windsor, CA 95492-8079 • USA Phone (707) 838-3925 info@argonautics.com www.argonautics.com
DRAWING NUMBER 574363 - 100	SHEET 1/1	CLIENT <b>SIGNET MARITIME CORPORATION</b>
REVISION 1	DATE 02/25/'10	<small>Copyright © Argonautics Marine Engineering. The contents of this drawing are property of Argonautics Marine Engineering. No part of this drawing may be reproduced, stored in a retrieval system, or transmitted in any form or by any means, electronic, mechanical, photocopying, recording or otherwise, without prior written permission of Argonautics Marine Engineering.</small>
DRAWN F.v.H.		




**LOAD DISTRIBUTION TYPE AND LIMITS**

-  Uniform deck load anywhere = 3715 lbs/ft<sup>2</sup> (18.1 t/m<sup>2</sup>)
-  Intersection longitudinal bulkhead and transverse bulkhead = 970 kips (440 t)
-  Intersection transverse frame and longitudinal bulkhead = 570 kips (260 t)
-  Anywhere on longitudinal bulkhead = 310 kips (140 t)
-  Anywhere on transverse bulkhead = 445 kips (200 t)
-  Anywhere on transverse frame = 130 kips (59 t)
-  Line load on longitudinal bulkhead or transverse bulkhead = 100 kips/ft (140 t/m)
-  Line load on transverse frame = 21 kips/ft (30 t/m)

**NOTES**

Not all loads can be combined!  
 Total load not to exceed 5,600 LT, see also Trim & Stability booklet  
 Support area point loads at least 30' x 30'  
 Support width line loads at least 12"  
 Still water bending moment to be checked  
 When in doubt, consult owner

Particulars are believed to be correct but not guaranteed.

VESSEL <i>SIGNET HERCULES</i>		 <b>ARGONAUTICS MARINE ENGINEERING</b> <small>specialists in marine heavy-lift transportation engineering marine surveyors • naval architects</small>	
DRAWING <b>DECK LOAD DIAGRAM</b>			
VESSEL TYPE DECK BARGE	SCALE n.t.s.	170 Windsor River Road, Suite B • Windsor, CA 95492-8079 • USA Phone (707) 838-3925 Info@argonautics.com www.argonautics.com	
DRAWING NUMBER 574363 - 101	SHEET 1/1	CLIENT <b>SIGNET MARITIME CORPORATION</b>	
REVISION 1	DATE 02/25/10	DRAWN F.v.H.	

COPYRIGHT by Argonautics Marine Engineering. The contents of this drawing are property of Argonautics Marine Engineering. No part may be brought to the knowledge of third parties in original or reproduction in any form or by any means, electronic, mechanical, photocopying, recording or otherwise, without prior written permission of Argonautics Marine Engineering.