



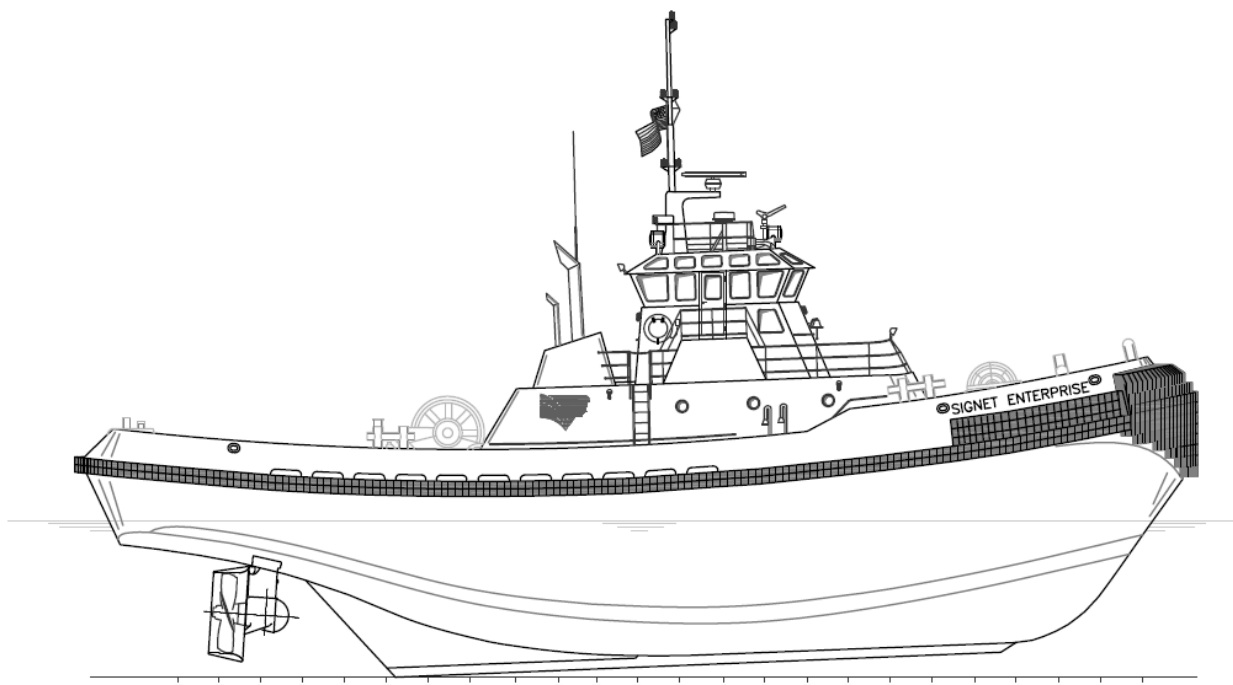
## SIGNET ENTERPRISE

<b>OWNER/CHARTERER</b>	Signet Maritime Corporation Ingleside, Texas	<b>CAPACITIES</b>	Fuel Oil Potable Water	103,181 Gallons 7,000 Gallons
<b>DESIGNER</b>	Marco Shipbuilding Seattle, Washington	<b>BERTHING</b>		8
<b>BUILDER</b>	Marco Shipbuilding Seattle, Washington	<b>PROPULSION</b>	HP/Engine Total Horsepower Z-Drives Propellers	Two (2) Caterpillar Model 3516B 2,200 4,400 Two (2) Ulstein, Model 1650H Two (2) 94.5" Diameter (2,400 mm) 4-Blade NIBRAL in Kort Nozzles
<b>YEAR BUILT</b>	1999	<b>GENERATORS</b>	Power	Two (2) Caterpillar Model 3304 105kW (each), 60Hz, 208V
<b>SERVICE</b>	Harbor, Ocean Towing-ASD Tug	<b>BOLLARD PULL</b>	Ahead Astern Maximum Achieved	62.60 Tonnes / 69 Tons 53.52 Tonnes / 59 Tons 65.77 Tonnes / 72.50 Tons
<b>CLASSIFICATION</b>	ABS Loadline	<b>WINCHES</b>	Forward Hawser Aft Hawser	Burrard Iron Works Model HE Double Drum Burrard Iron Works Model HJD
<b>OFFICIAL NUMBERS</b>	1078814	<b>LINE FOR VESSEL ASSIST</b>		Neutron 8 Strand 2-5/8" Diameter 8" Circumference 530,000 Breaking Strength
<b>DIMENSIONS</b>	Molded Length Extreme Length Molded Breadth Extreme Breadth Length at Waterline Molded Depth Deep Draft Height of Eye Gross Registered Tonnage	105' 108' 34' 36'10" 100'5" 16'6" 16' 22'5" 366		
<b>TOWING WIRE</b>	2-1/4" x 2,000 ft. 2" x 2,200 ft.			

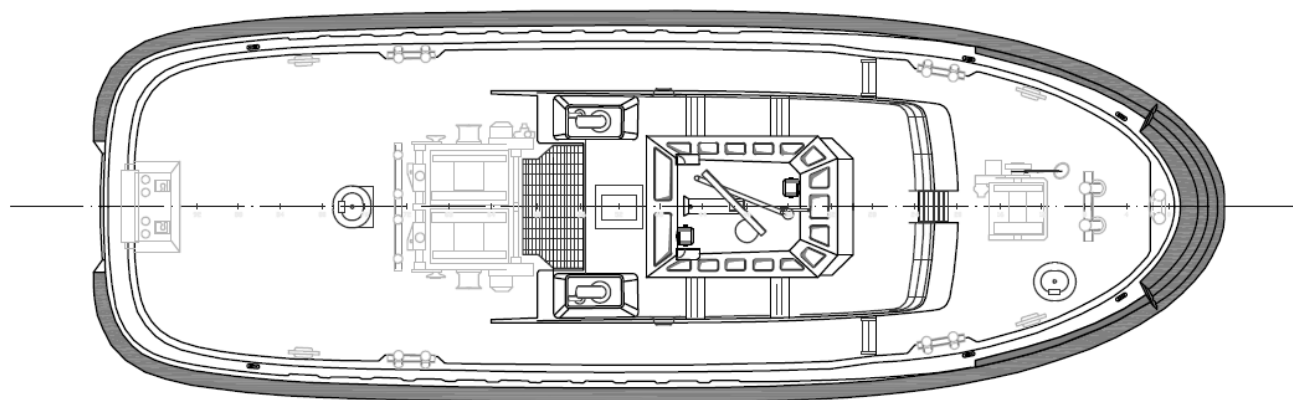
Signet Maritime Corporation  
+1 361 776 7500

[Shipping@SignetMaritime.com](mailto:Shipping@SignetMaritime.com)  
[www.signetmaritime.com](http://www.signetmaritime.com)

Certified to ISO 9001:2008, ISM, STCW 95, MTSA, AWO-RCP



Profile View



Plan View