



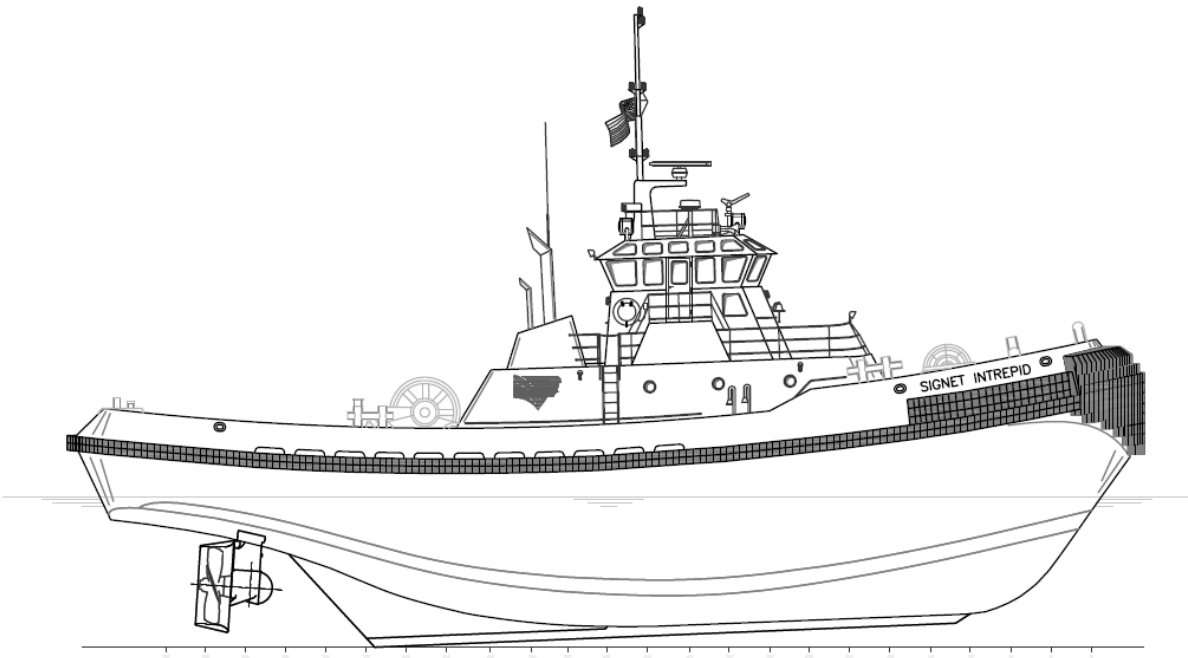
SIGNET INTREPID

OWNER/CHARTERER	Signet Maritime Corporation Ingleside, Texas	CAPACITIES	Fuel Oil Potable Water	103,181 Gallons 7,000 Gallons
DESIGNER	Marco Shipbuilding Seattle, Washington	BERTHING		8
BUILDER	Marco Shipbuilding Seattle, Washington	PROPULSION	HP/Engine Total Horsepower Z-Drives Propellers	Two (2) Caterpillar Model 3516B 2,200 4,400 Two (2) Ulstein, Model 1650 H Two (2) 94.5" Diameter (2,400 mm) 4-Blade NIBRAL in Kort Nozzles
YEAR BUILT	1999	GENERATORS	Power	Two (2) Caterpillar Model 3304 105kW (each), 60Hz, 208V
SERVICE	Harbor, Ocean Towing-ASD Tug	BOLLARD PULL	Sustained Ahead Sustained Astern Maximum Achieved	60.33 Tonnes / 66.50 Tons 54.66 Tonnes / 60.25 Tons 61.69 Tonnes / 68.00 Tons
CLASSIFICATION	ABS Loadline	WINCHES	Forward Hawser Aft Hawser	Burrard Iron Works Model HE Double Drum Burrard Iron Works Model HJD
OFFICIAL NUMBERS	1078815	LINE FOR VESSEL ASSIST		Neutron 8 Strand 2-5/8" Diameter 8" Circumference 530,000 Breaking Strength
DIMENSIONS				
Molded Length	105'			
Extreme Length	108'			
Molded Breadth	34'			
Extreme Breadth	36'10"			
Length at Waterline	100'5"			
Molded Depth	16'6"			
Deep Draft	16'			
Height of Eye	22'5"			
Gross Registered Tonnage	366			
TOWING WIRE	2-1/4" x 2,000 ft. 2" x 2,200 ft.			

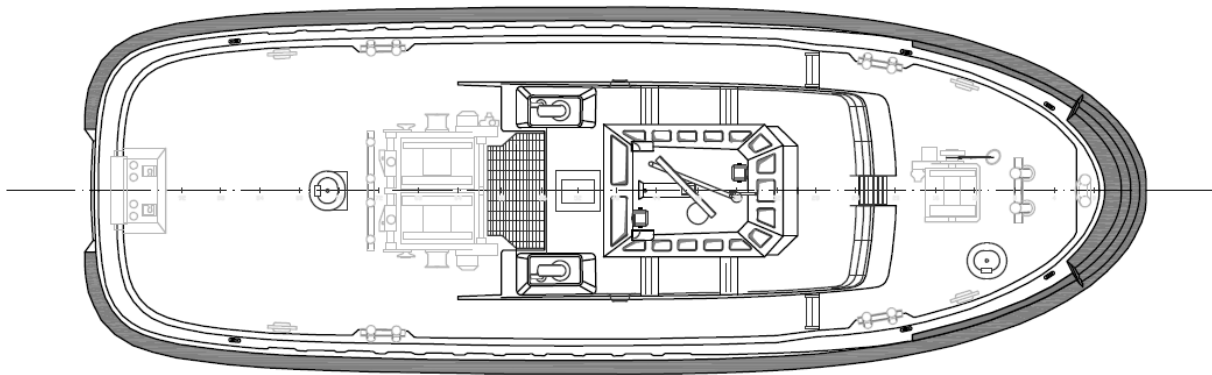
Signet Maritime Corporation
+1 361 776 7500

Shipping@SignetMaritime.com
www.signetmaritime.com

Certified to ISO 9001:2008, ISM, STCW 95, MTSA, AWO-RCP



Profile View



Plan View