



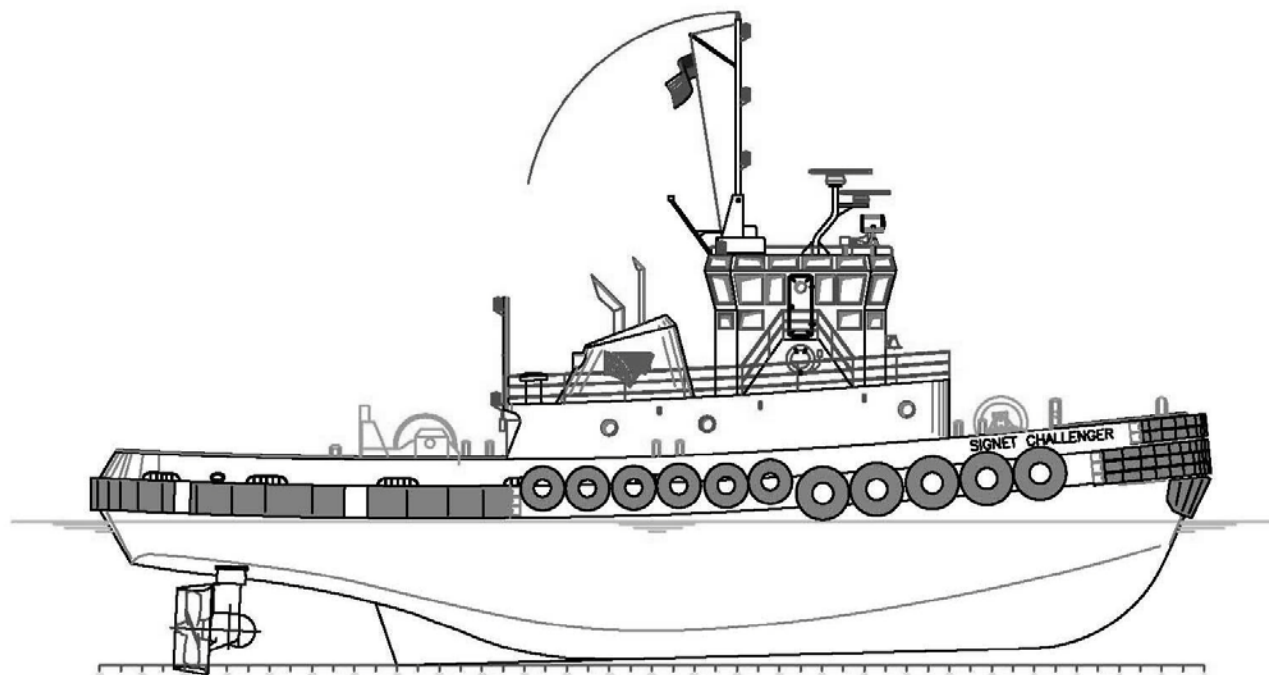
SIGNET CHALLENGER

OWNER/CHARTERER	Signet Maritime Corporation Ingleside, Texas	BERTHING	5
FORMER OWNER	Harley Marine Services	PROPULSION	Two (2) Cummins Model QSK60
DESIGNER	Entech & Associates, Inc. Houma, Louisiana	HP/Engine	2,100
BUILDER	Thoma-Sea Boat Builders Houma, Louisiana	Total Horsepower	4,200
YEAR BUILT	2003	Z-Drives	Two (2) Rolls Royce Model US205
SERVICE	Harbor-ASD Tug	Propellers	Two (2) 84.6" x 78.6" 4-Blade NIBRAL in Kort Nozzles
CLASSIFICATION	ABS Loadline	GENERATORS	Two (2) Cummins Model 6BTA5.9
OFFICIAL NUMBER	1145058	Power	95kW (each), 60Hz, 208V
DIMENSIONS		EST. BOLLARD PULL	
LOA	104'	Ahead	49 Metric Tonnes
Breadth	36'	Astern	44 Metric Tonnes
Depth	16'	WINCHES	
Deep Draft	13'6"	Hawser	Markey Model DYSF-42
Height of Eye	22'7"	Towing	Almon A. Johnson Model 333
Gross Registered Tonnage	379	LINE FOR DOCKING SHIPS	Neutron 8 Strand 2-5/8" Diameter 8" Circumference 530,000 Breaking Strength
CAPACITIES			
Fuel Oil	107,000 Gallons		
Potable Water	5,000 Gallons		
Lube Oil Storage	500 Gallons		
Hydraulic Oil Storage	500 Gallons		
Dirty Oil Storage	1,000 Gallons		

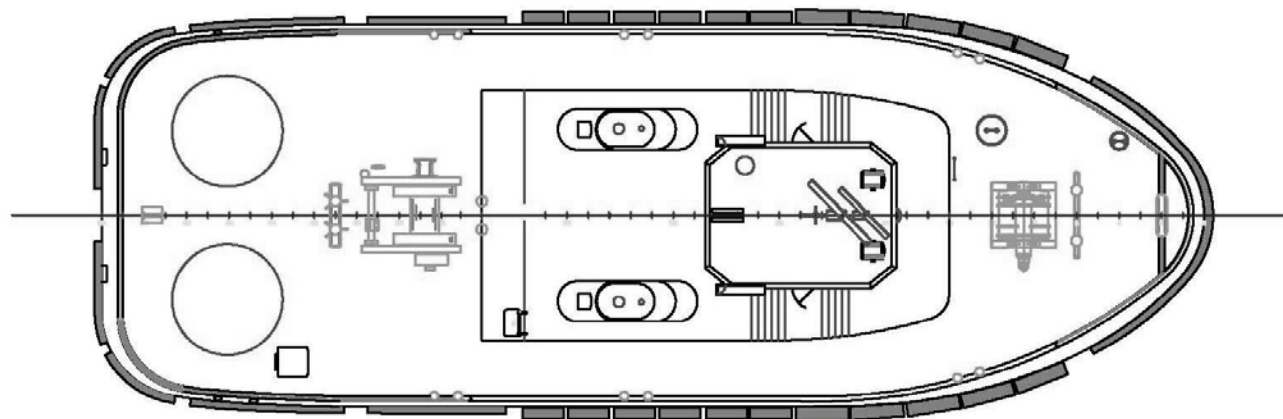
Signet Maritime Corporation
+1 361 776 7500

Shipping@SignetMaritime.com
www.signetmaritime.com

Certified to ISO 9001:2008, ISM, STCW 95, MTSA, AWO-RCP



Profile View



Plan View