



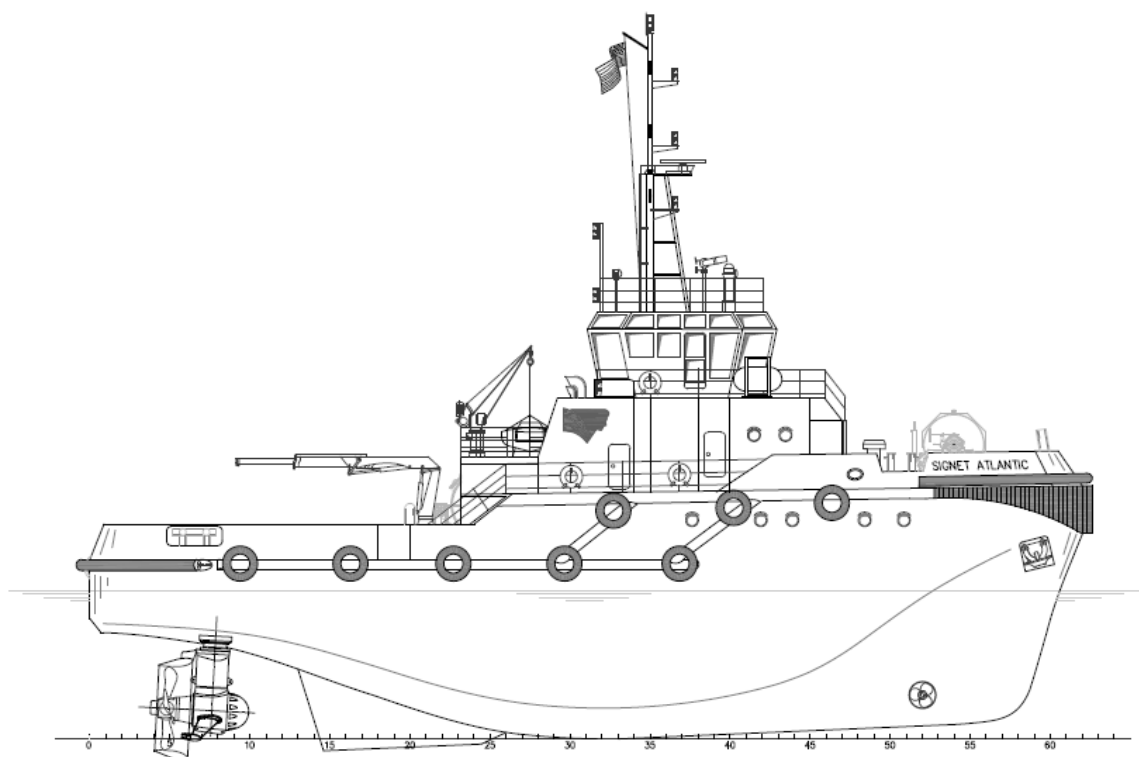
## SIGNET ATLANTIC

<b>OWNER/CHARTERER</b>	Signet Maritime Corporation Dubai, United Arab Emirates	<b>BERTHING</b>	12
<b>DESIGNER</b>	Guangdong Hope Yue Shipbuilding, China	<b>PROPULSION</b>	Two (2) Caterpillar Model 3516BHD
<b>BUILDER</b>	Guangdong Hope Yue Shipbuilding, China	HP/Engine	2,682
<b>YEAR BUILT</b>	2009	Total Horsepower	5,364
<b>SERVICE</b>	Anchor Handling-ASD Tug	Z-Drives	Two (2) Rolls Royce Aquamaster Model U5255CP
<b>CLASSIFICATION</b>	Lloyd's Register ✕100A1, ✕LMC, ✕ FiFi1	Propellers	Two (2) 102.4" (2,600 mm) Diameter 4-Blade NIBRAL in Kort Nozzles
<b>OFFICIAL NUMBER</b>	9499199	<b>BOW THRUSTER</b>	Caterpillar C7, 250 BHP
<b>DIMENSIONS</b>		<b>GENERATORS</b>	Two (2) Cummins Model 6CTA8.3
Molded Length	101'8"	Power	136 kW (each), 80V
Breadth	36'1"		One (1) Caterpillar Model 1104C.44TA6
Depth	18'4"	Power	69 kW, 380V
Deep Draft	15'1"	<b>FIFI-1 SYSTEM</b>	Two (2) FFS Pumps Model SFP 250x350
Height of Eye	26'	Prime Movers	Main Engines, Forward End
Gross Registered Tonnage	475	Monitors	Two (2) FFS Model 1200LB, Remote Controlled
<b>CAPACITIES</b>		<b>BOLLARD PULL</b>	
Fuel Oil	56,000 Gallons	Ahead	72 Metric Tonnes
Potable Water	17,000 Gallons	Astern	64 Metric Tonnes
<b>WINCHES</b>			
Forward Hawser	Split Drum, Hydraulic		
Aft Towing	Single Drum, Hydraulic		
<b>LINE FOR VESSEL ASSIST</b>	Two (2) 110m x 80 mm Polypropylene		
<b>TOWING WIRE</b>	One (1) 700m x 52 mm, Steel		

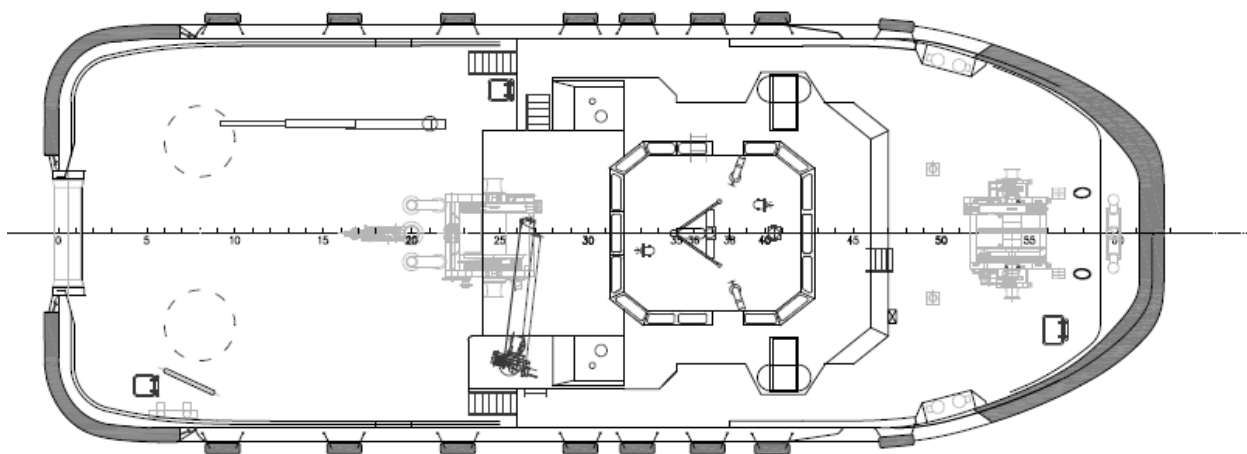
Signet Maritime Corporation  
+1 361 776 7500

[Shipping@SignetMaritime.com](mailto:Shipping@SignetMaritime.com)

[www.signetmaritime.com](http://www.signetmaritime.com)



Profile View



Plan View